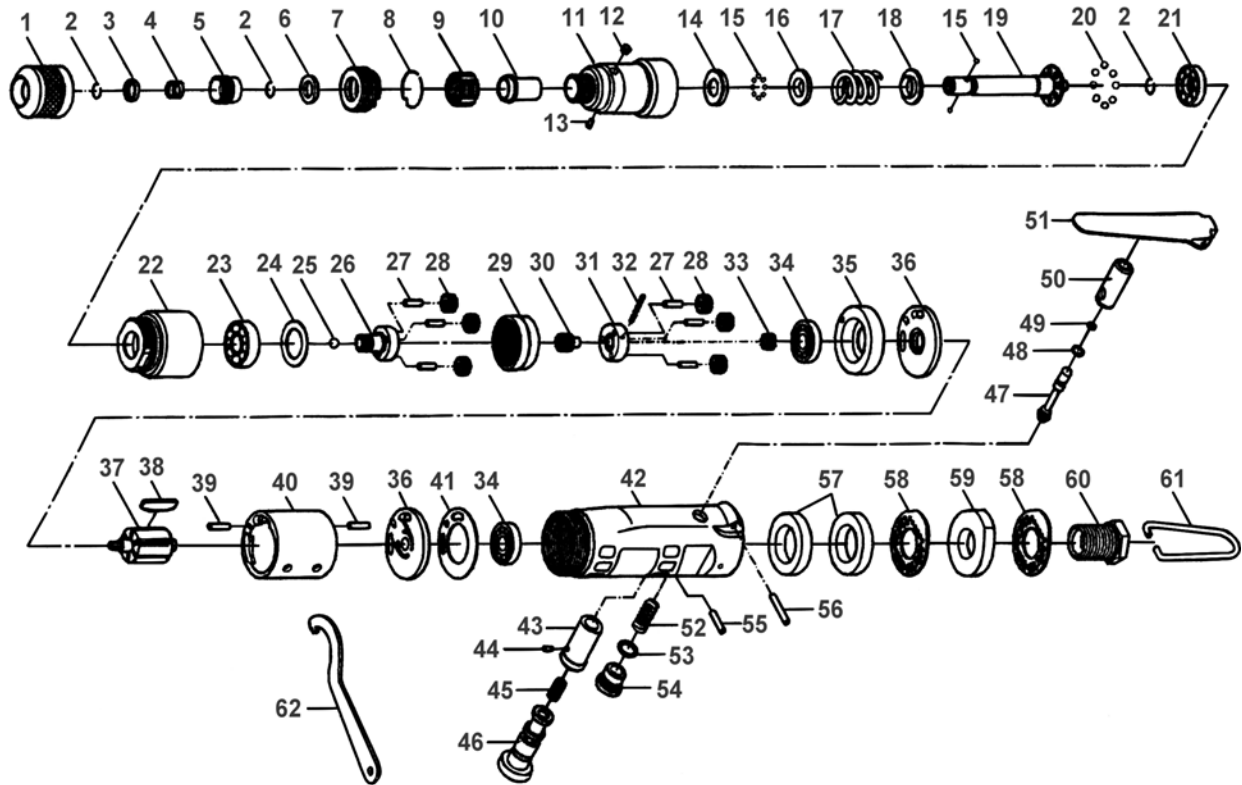


# 0900 0908 - ATORNILLADOR RECTO



## SPECIFICATIONS :

\* HEX. SHANK SIZE ----- 1/4"  
 \* TORQUE ----- 26 - 125 IN/LBS  
 \* AIR PRESSURE ----- 90 PSI  
 \* HOSE SIZE ----- 3/8" ID

\* BOLT CAPACITY ----- 5 MM  
 \* FREE SPEED ----- 800 RPM  
 \* AIR CON. ----- 10 CFM  
 \* AIR INLET-----1/4" PT(NPT)

REF NO.	PARTS NO.	DESCRIPTION	Q'TY	REF NO.	PARTS NO.	DESCRIPTION	Q'TY
1	0900090801	TORQUE ADJUSTER	1	32	0900090832	SPRING PIN	1
2	0900090802	ANVIL COLLAR	3	33	0900090833	ROTOR GEAR	1
3	0900090803	HOLDER SPACER	1	34	0900090834	BALL BEARING	2
4	0900090804	SPRING	1	35	0900090835	FRONT BEARING HOUSE	1
5	0900090805	QUICK CHANGE HOLDER	1	36	0900090836	REAR END PLATE	2
6	0900090806	WASHER	1	37	0900090837	ROTOR	1
7	0900090807	ADJUSTING SCREW	1	38	0900090838	ROTOR BLADE	5
8	0900090808	SNAP RING	1	39	0900090839	SPRING PIN	2
9	0900090809	THREAD FIXER	1	40	0900090840	CYLINDER	1
10	0900090810	BUSHING	1	41	0900090841	REAR GASKET	1
11	0900090811	FRONT HOUSING	1	42	0900090842	MOTOR HOUSING	1
12	0900090812	RING	1	43	0900090843	VALVE SLEEVE	1
13	0900090813	GREASE FITTING	1	44	0900090844	SPRING PIN	1
14	0900090814	WASHER	1	45	0900090845	SPRING	1
15	0900090815	STEEL BALL	18	46	0900090846	REVERSE VALVE	1
16	0900090816	WASHER	1	47	0900090847	VALVE STEM	1
17	0900090817	SPRING	1	48	0900090848	"O" RING	1
18	0900090818	WASHER	1	49	0900090849	"O" RING	1
19	0900090819	ANVIL	1	50	0900090850	BUSHING	1
20	0900090820	STEEL BALL	8	51	0900090851	THROTTLE LEVER	1
21	0900090821	CLUTCH PLATE	1	52	0900090852	SPRING	1
22	0900090822	HOUSING COVER	1	53	0900090853	"O" RING	1
23	0900090823	BALL BEARING	1	54	0900090854	VALVE PLUG	1
24	0900090824	WASHER	1	55	0900090855	SPRING PIN	1
25	0900090825	STEEL BALL	1	56	0900090856	SPRING PIN	1
26	0900090826	GEAR CAGE B	1	57	0900090857	MUFFLER	2
27	0900090827	PIN	6	58	0900090858	EXHAUST DEFLECTOR	2
28	0900090828	IDLER GEAR	6	59	0900090859	MUFFLER	1
29	0900090829	IDLER GEAR HOUSING	1	60	0900090860	AIR INLET	1
30	0900090830	GEAR	1	61	0900090861	HANGER	1
31	0900090831	GEAR CAGE A	1	62	0900090862	WRENCH	1

## Optional Parts



\*\* To get maximum performance and life of your tool, replace the whole set of Parts Kit is highly recommended.