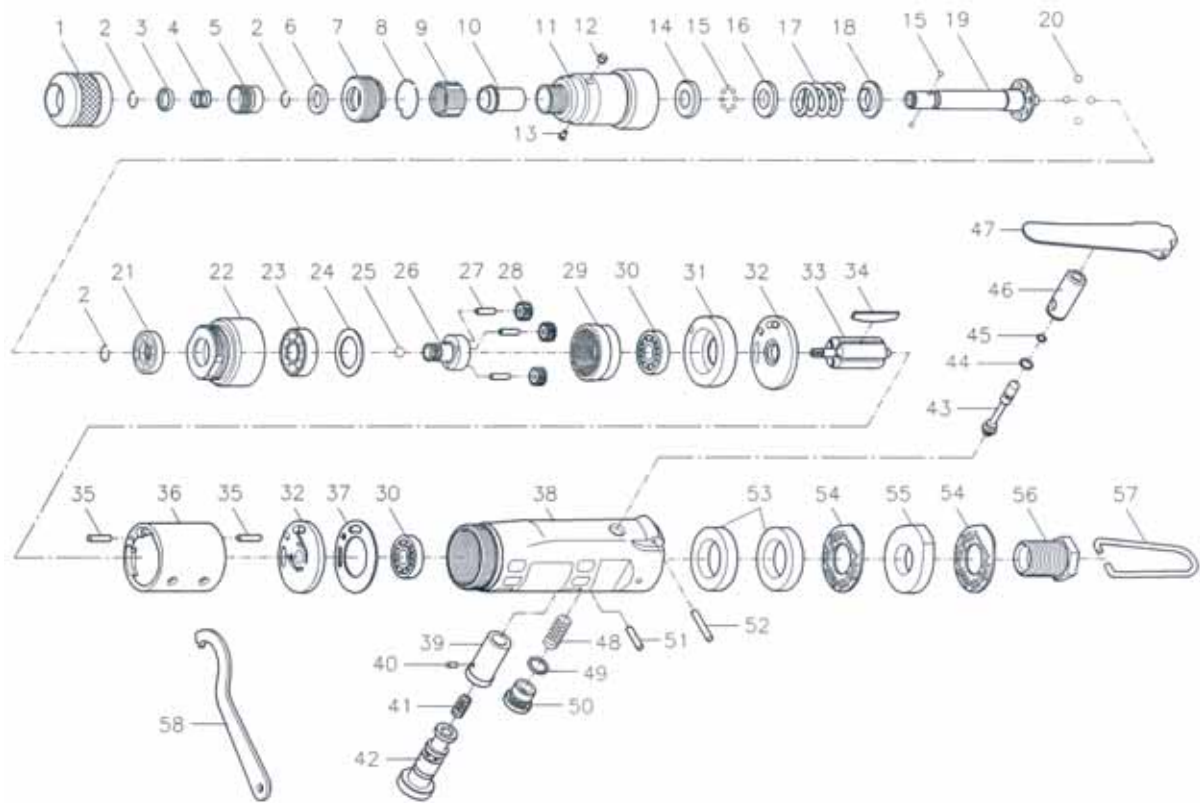


0900 0907 - ATORNILLADOR CON EMBRAGUE



SPECIFICATIONS :

* HEX. SHANK SIZE ----- 1/4"
 * MAX TORQUE ----- 90 IN-LBS
 * AIR PRESSURE ----- 90 PSI
 * HOSE SIZE ----- 3/8" ID

* BOLT CAPACITY ----- 5 MM
 * FREE SPEED ----- 1,800 RPM
 * AIR CON. ----- 10 CFM
 * AIR INLET----- 1/4" PT(NPT)

REF NO.	PARTS NO.	DESCRIPTION	Q'TY	REF NO.	PARTS NO.	DESCRIPTION	Q'TY
1	0900090701	TORQUE ADJUSTER	1	30	0900090730	BALL BEARING	1
2	0900090702	ANVIL COLLAR	3	31	0900090731	FRONT BEARING HOUSE	1
3	0900090703	HOLDER SPACER	1	32	0900090732	REAR END PLATE	2
4	0900090704	SPRING	1	33	0900090733	ROTOR	1
5	0900090705	QUICK CHANGE HOLDER	1	34	0900090734	ROTOR BLADE	5
6	0900090706	WASHER	1	35	0900090735	SPRING PIN	2
7	0900090707	ADJUSTING SCREW	1	36	0900090736	CYLINDER	1
8	0900090708	SNAP RING	1	37	0900090737	REAR GASKET	1
9	0900090709	THREAD FIXER	1	38	0900090738	MOTOR HOUSING	1
10	0900090710	BUSHING	1	39	0900090739	VALVE SLEEVE	1
11	0900090711	FRONT HOUSING	1	40	0900090740	SPRING PIN	1
12	0900090712	RING	1	41	0900090741	SPRING	1
13	0900090713	GREASE FITTING	1	42	0900090742	REVERSE VALVE	1
14	0900090714	WASHER	1	43	0900090743	VALVE STEM	1
15	0900090715	STEEL BALL	18	44	0900090744	"O" RING	1
16	0900090716	WASHER	1	45	0900090745	"O" RING	1
17	0900090717	SPRING	1	46	0900090746	BUSHING	1
18	0900090718	WASHER	1	47	0900090747	THROTTLE LEVER	1
19	0900090719	ANVIL	1	48	0900090748	SPRING	1
20	0900090720	STEEL BALL	4	49	0900090749	"O" RING	1
21	0900090721	CLUTCH PLATE	1	50	0900090750	VALVE PLUG	1
22	0900090722	HOUSING COVER	1	51	0900090751	SPRING PIN	1
23	0900090723	BALL BEARING	1	52	0900090752	SPRING PIN	1
24	0900090724	WASHER	1	53	0900090753	MUFFLER	2
25	0900090725	STEEL BALL	1	54	0900090754	EXHAUST DEFLECTOR	2
26	0900090726	GEAR HOUSING	1	55	0900090755	MUFFLER	1
27	0900090727	PIN	3	56	0900090756	AIR INLET	1
28	0900090728	IDLER GEAR	3	57	0900090757	HANGER	1
29	0900090729	IDLER GEAR HOUSING	1	58	0900090758	WRENCH	1

Optional Parts



** To get maximum performance and life of your tool, replace the whole set of Parts Kit is highly recommended.