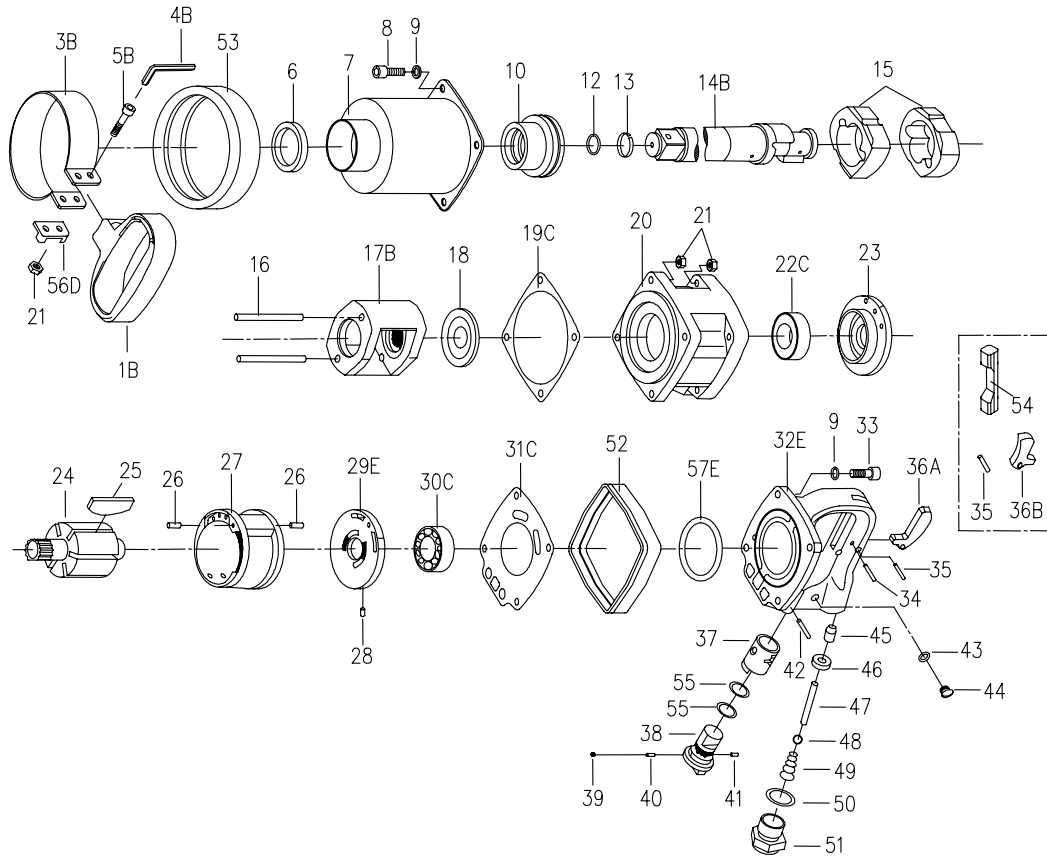


# 0900 0103 - PISTOLA DE IMPACTO 1" - LARGA



## SPECIFICATIONS :

\* SQUARE DRIVE ----- 1"  
 \* MAX TORQUE----- 1800FT-LBS  
 \* AIR PRESSURE ----- 90 -115 PSI  
 \* AIR INLET ----- 1/2" PT(NPT)

\* BOLT CAPACITY----- 1-3/4"  
 \* FREE SPEED ----- 4,000 RPM  
 \* HOSE SIZE ----- 1/2" ID

REF NO.	PARTS NO.	DESCRIPTION	Q'TY	REF NO.	PARTS NO.	DESCRIPTION	Q'TY
1B	0900010301B	HANDLE	1	34	0900010334	SPRING PIN	1
3B	0900010303B	CLAMPER	1	35	0900010335	PIN	1
4B	0900010304B	HEX. WRENCH (6 MM)	1	##36A	0900010336A	OUTER TRIGGER	1
5B	0900010305B	CAP SCREW (M8x50L)	2	36B	0900010336B	INNER TRIGGER	1
6	0900010306	OIL SEAL	1	37	0900010337	REVERSE VALVE BUSHING	1
7	0900010307	HAMMER CASE	1	38	0900010338	REVERSE VALVE	1
8	0900010308	CAP SCREW	4	39	0900010339	STEEL BALL	1
9	0900010309	SPRING WASHER	8	40	0900010340	SPRING	1
10	0900010310	BUSHING	1	41	0900010341	SPRING PIN	1
12	0900010312	"O" RING (d17.8xW2.4)	1	42	0900010342	SPRING PIN	1
13	0900010313	ANVIL COLLAR	1	43	0900010343	"O" RING	1
14B	0900010314B	8"ANVIL	1	44	0900010344	OIL CHAMBER SCREW	1
15	0900010315	HAMMER	2	45	0900010345	VALVE BUSHING	1
16	0900010316	HAMMER PIN	2	46	0900010346	BUSHING	1
17B	0900010317B	HAMMER CAGE	1	47	0900010347	VALVE STEM	1
18	0900010318	REAR WASHER	1	48	0900010348	STEEL BALL	1
19C	0900010319C	FRONT GASKET	1	49	0900010349	SPRING	1
20	0900010320	MOTOR HOUSING	1	50	0900010350	"O" RING	1
21	0900010321	LOCK NUT (M8)	10	51	0900010351	AIR INLET	1
22C	0900010322C	BALL BEARING	1	52	0900010352	HOUSING BAND	1
23	0900010323	FRONT END PLATE	1	53	0900010353	FRONT RUBBER	1
24	0900010324	ROTOR	1	54	0900010354	RUBBER PROTECTOR	1
25	0900010325	ROTOR BLADE	6	55	0900010355	"O" RING (d18.0xW2.0)	2
26	0900010326	SPRING PIN	2	56D	0900010356D	STOPPER	1
27	0900010327	CYLINDER	1	57E	0900010357E	GASKET	1
28	0900010328	SPRING PIN	1	K02	09000103K02	HAMMER OVERHAUL KIT : (12, 13, 14B, 15, 16, 19C)	1 SET
29E	0900010329E	REAR END PLATE	1				
30C	0900010330C	BALL BEARING	1	K03	09000103K03	AIR MOTOR OVERHAUL KIT : (22C, 23, 25, 26, 27, 28, 29E, 30C, 31C)	1 SET
31C	0900010331C	REAR GASKET	1				
32E	0900010332E	HANDLE FRAME	1	K04	09000103K04	VALVE OVERHAUL KIT : (35, 36B, 46, 47, 48, 49, 50, 51)	1 SET
33	0900010333	CAP SCREW	4				

## Optional Parts



\*\* To get maximum performance and life of your tool, replace the whole set Parts Kit is highly recommended.